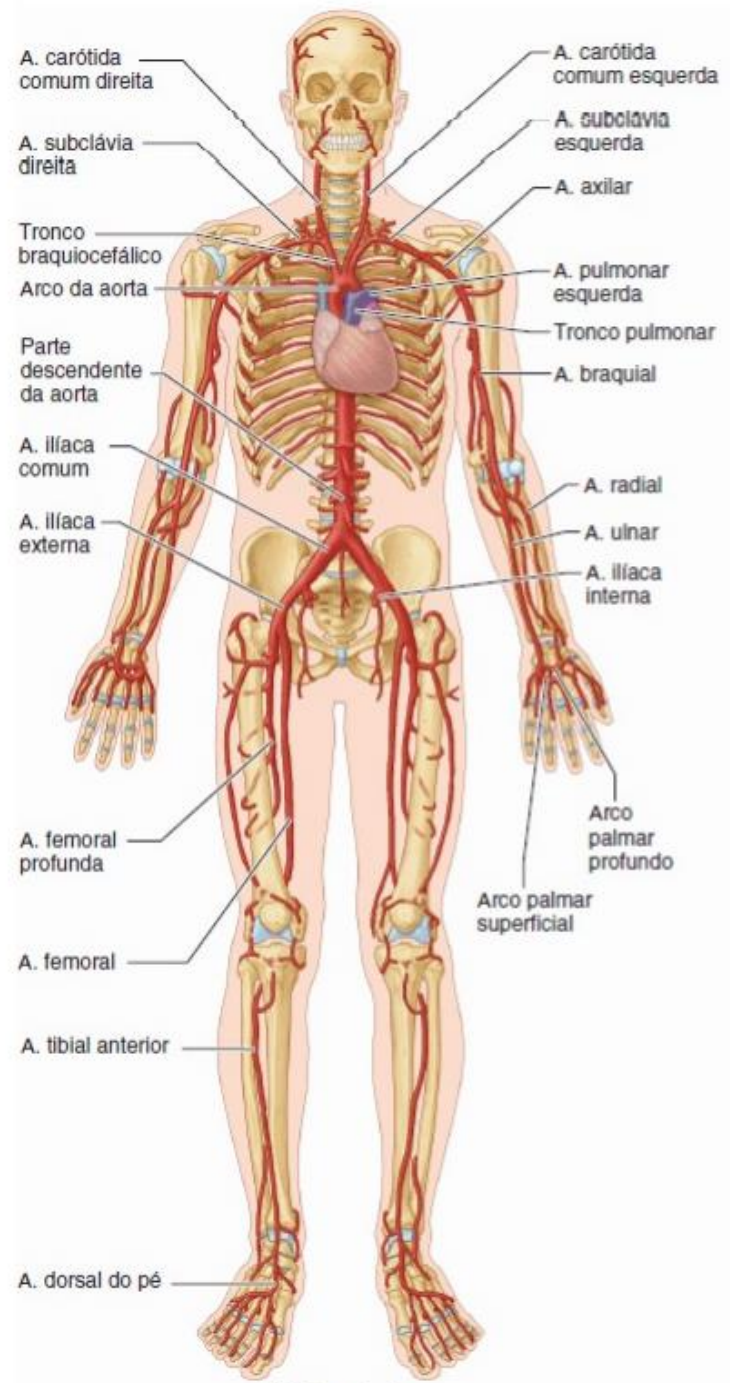
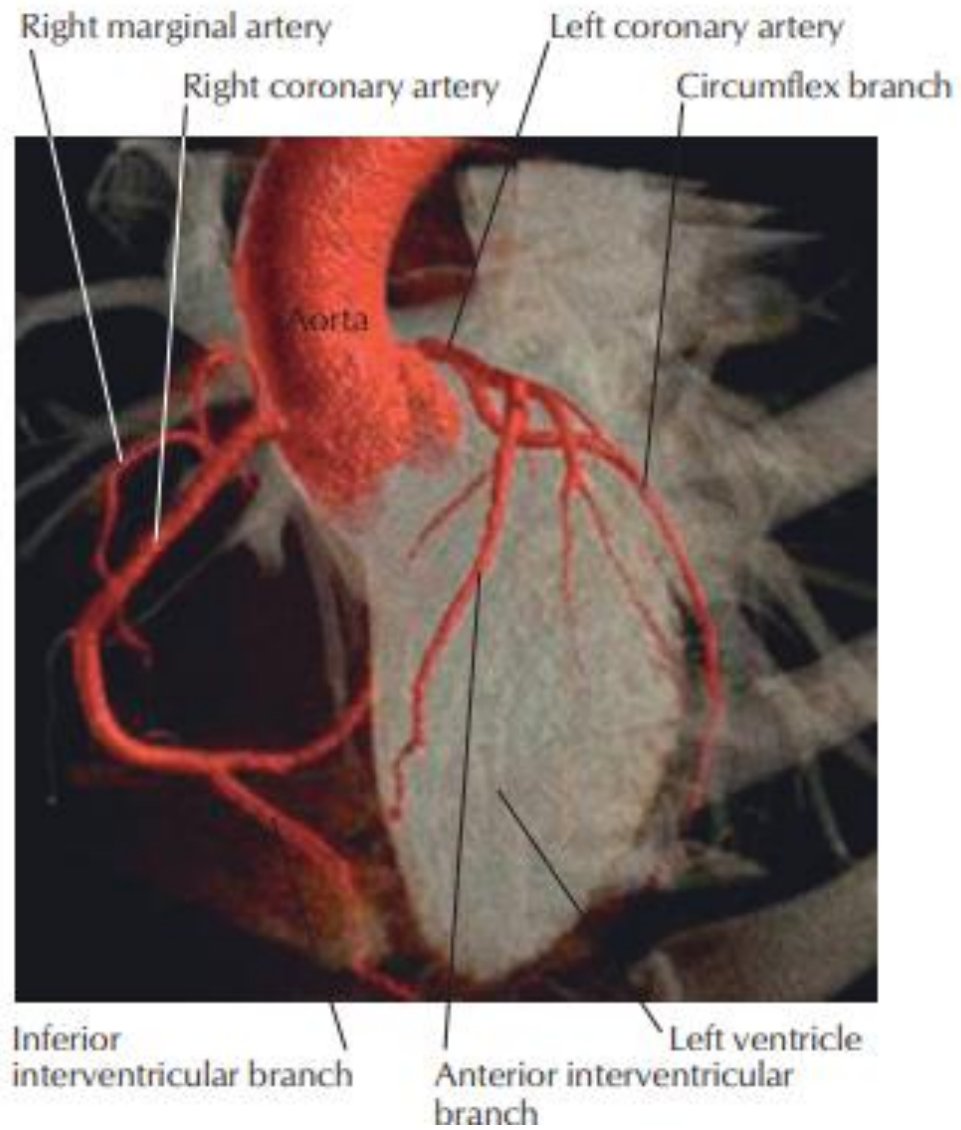


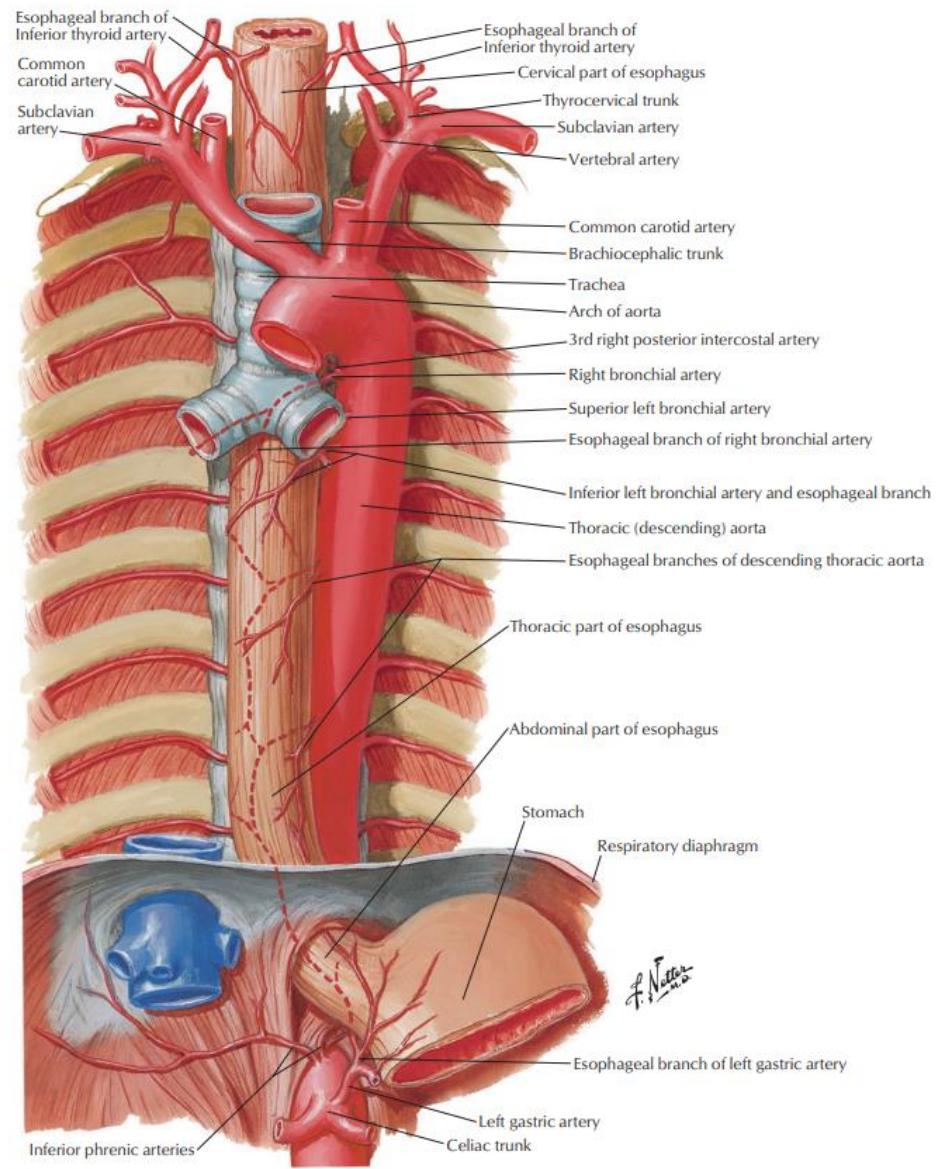
Sistema Arterial Supra e Infra diafragmática

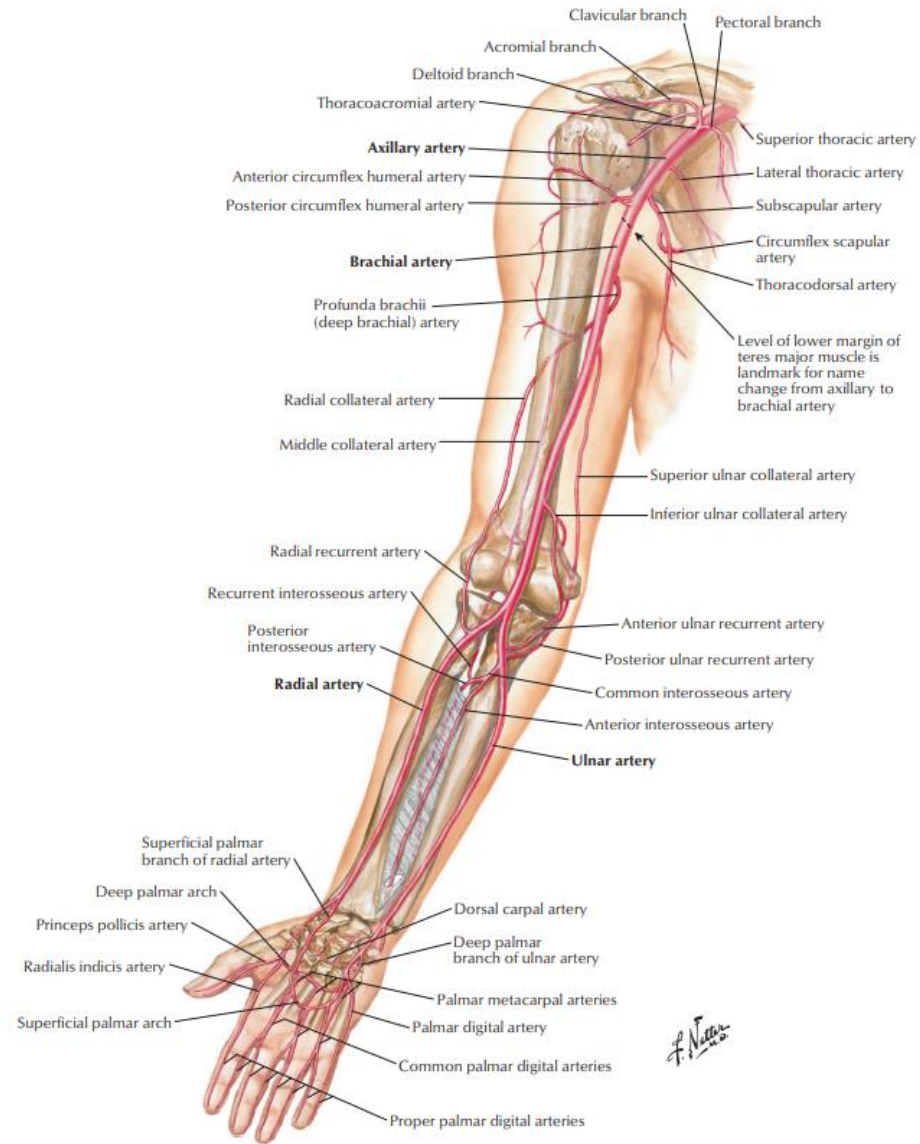
Chiara Beletato

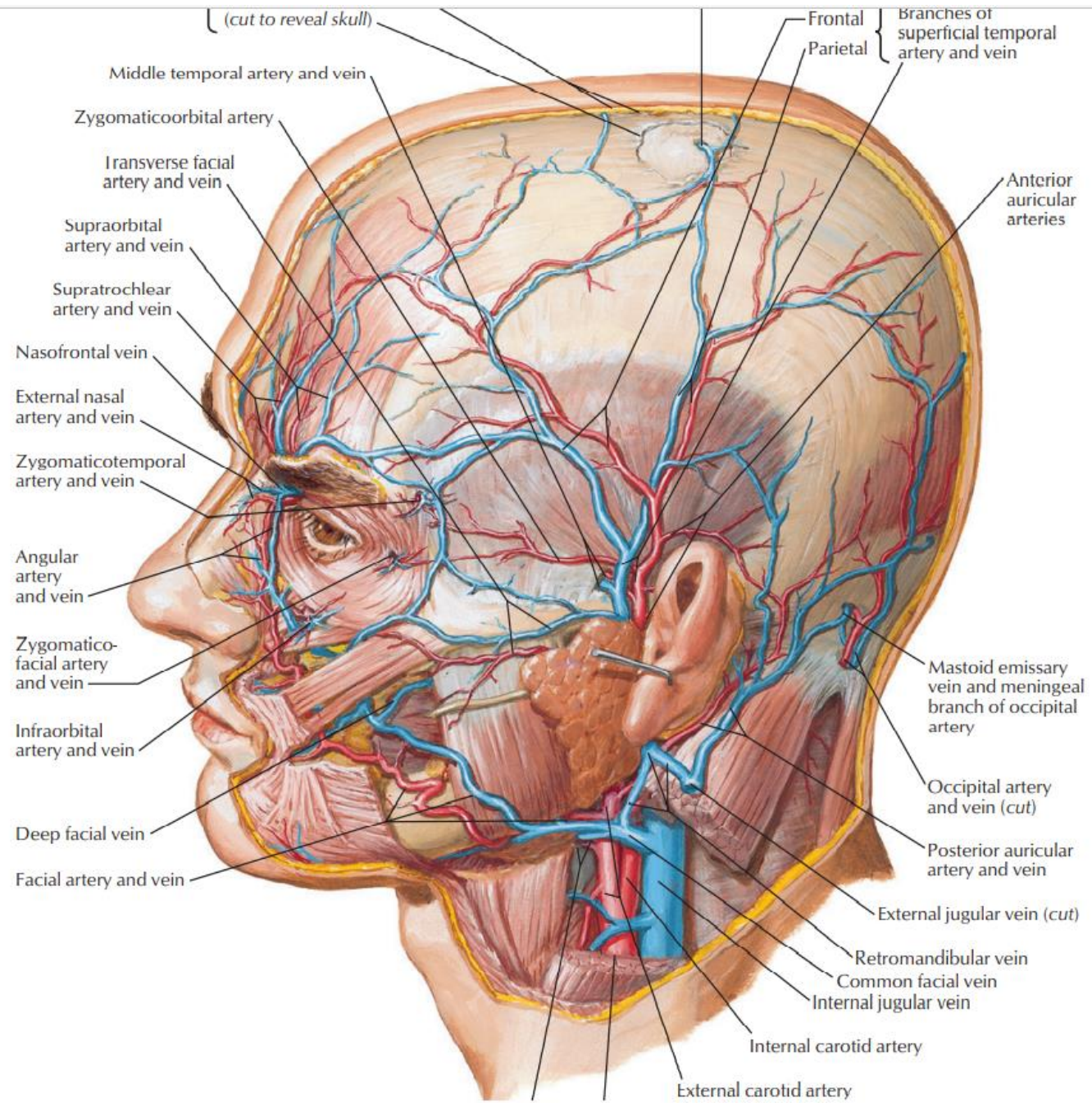


A. Vista anterior

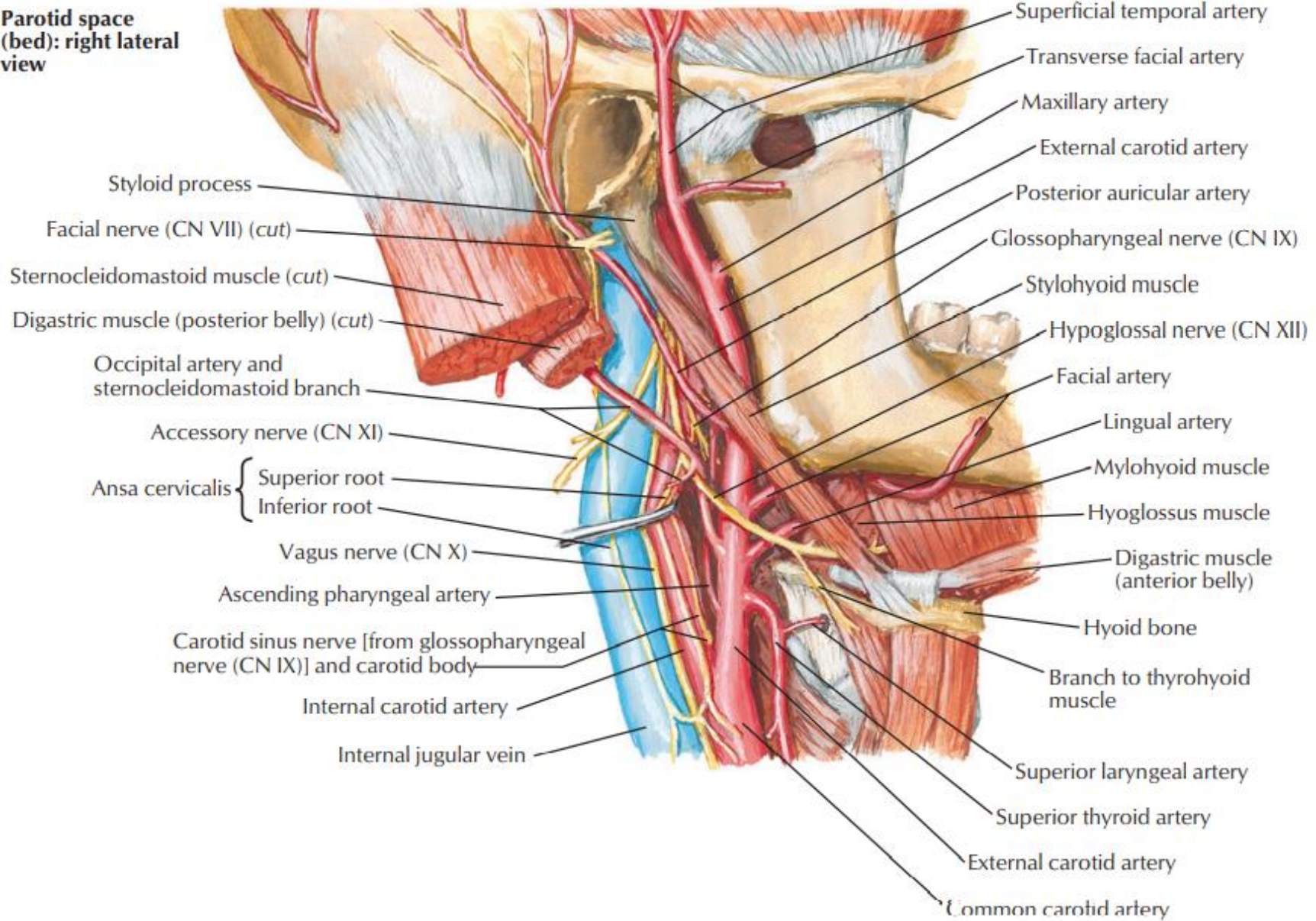


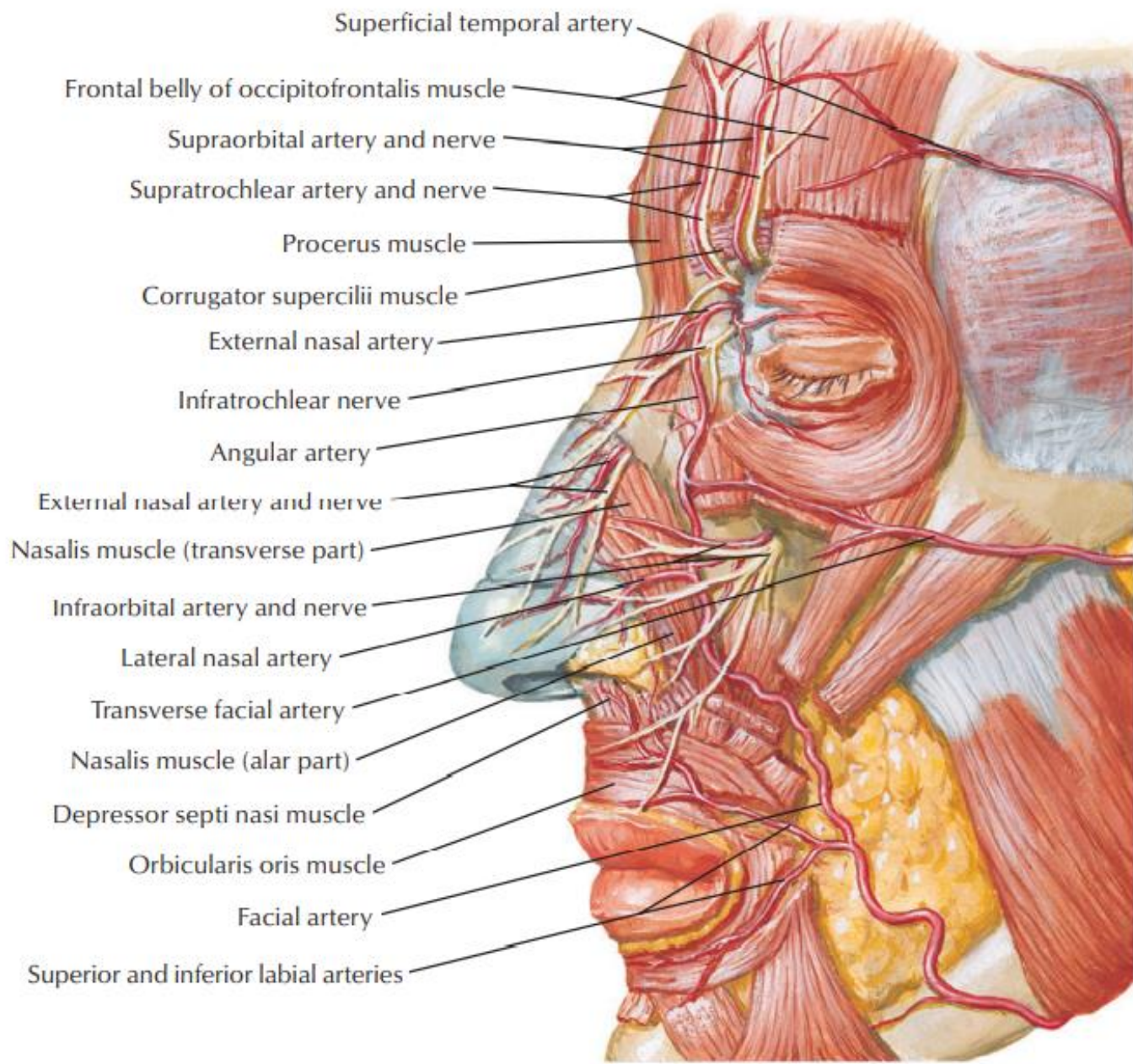




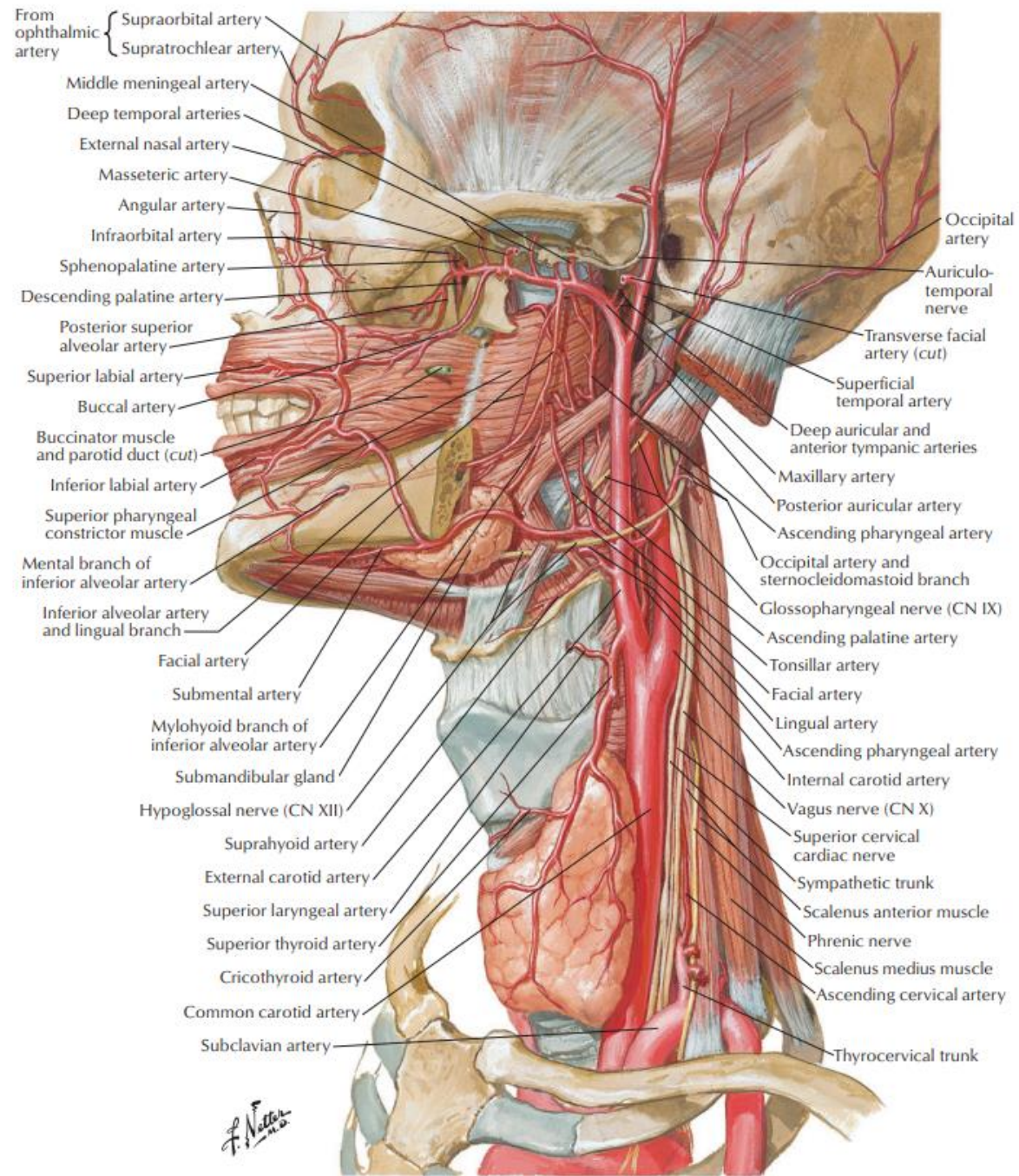


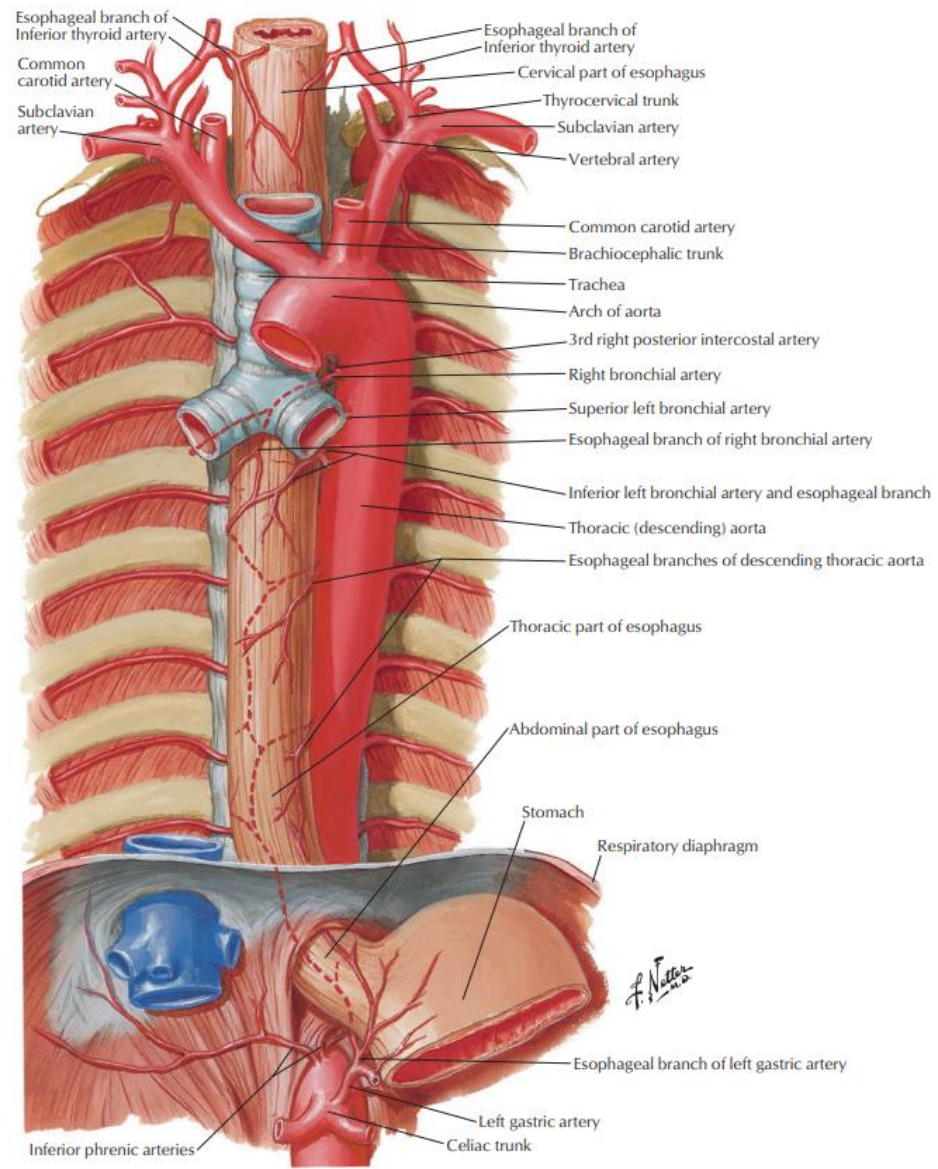
**Parotid space
(bed): right lateral
view**

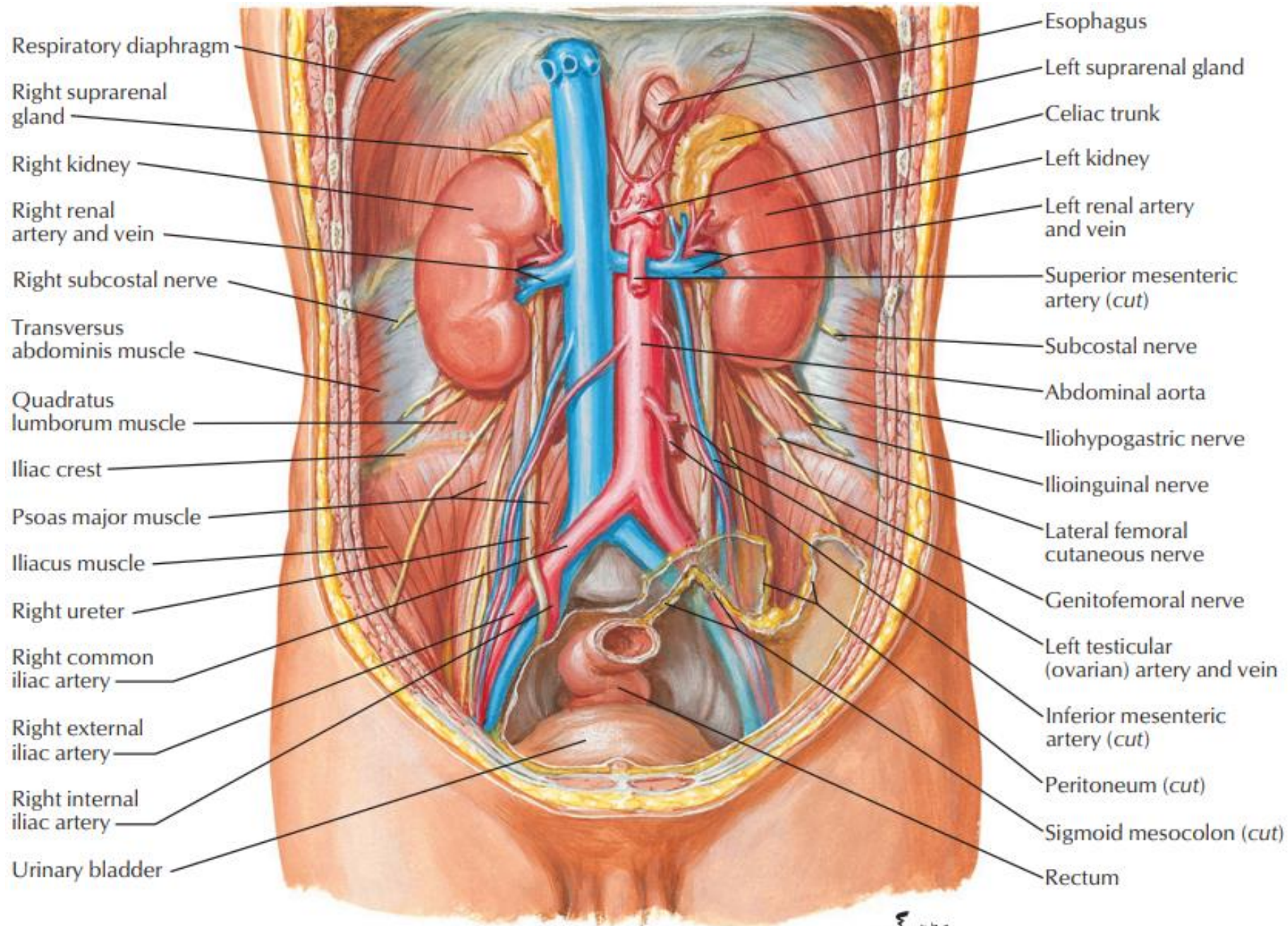




*F. Netter
M.D.*



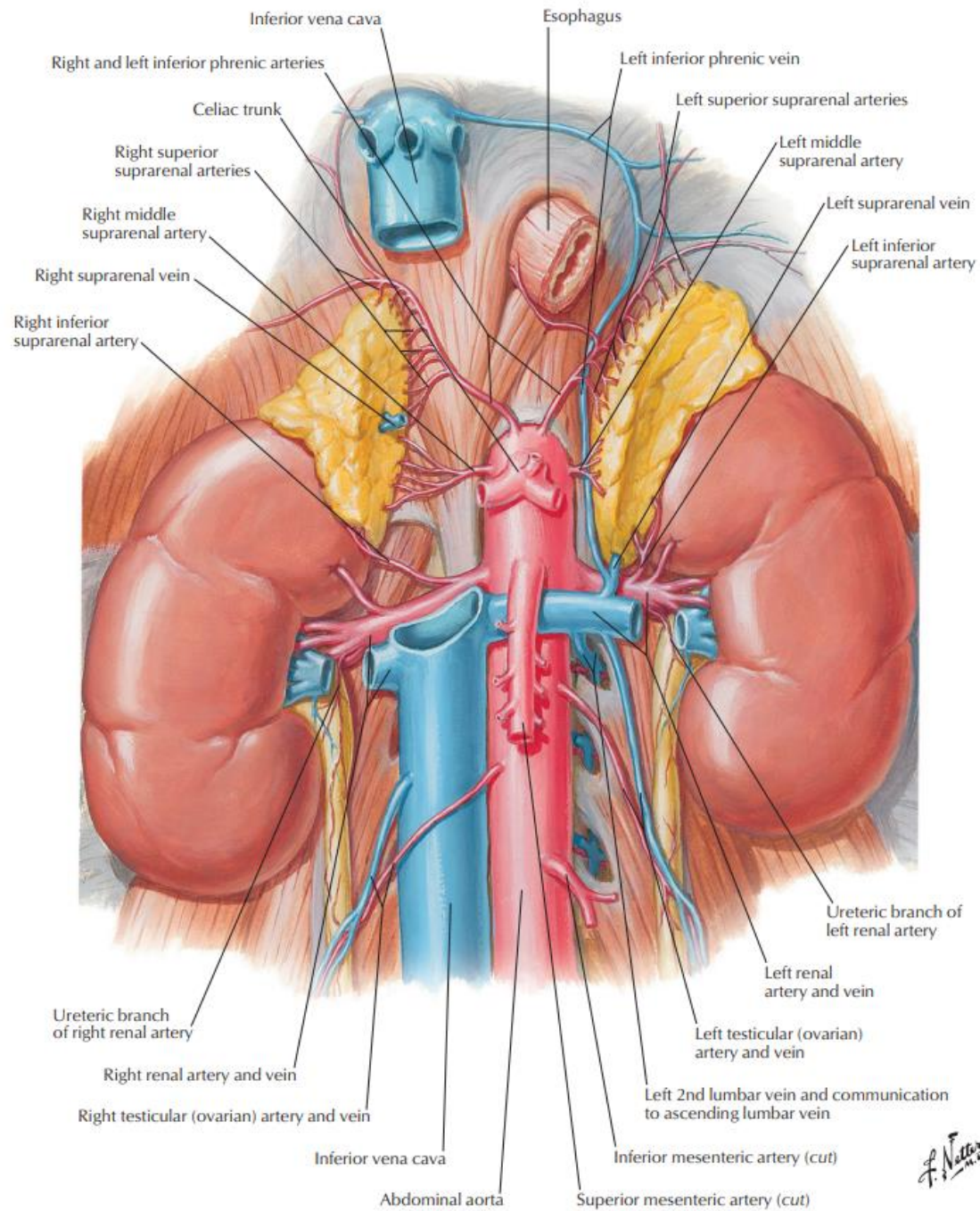




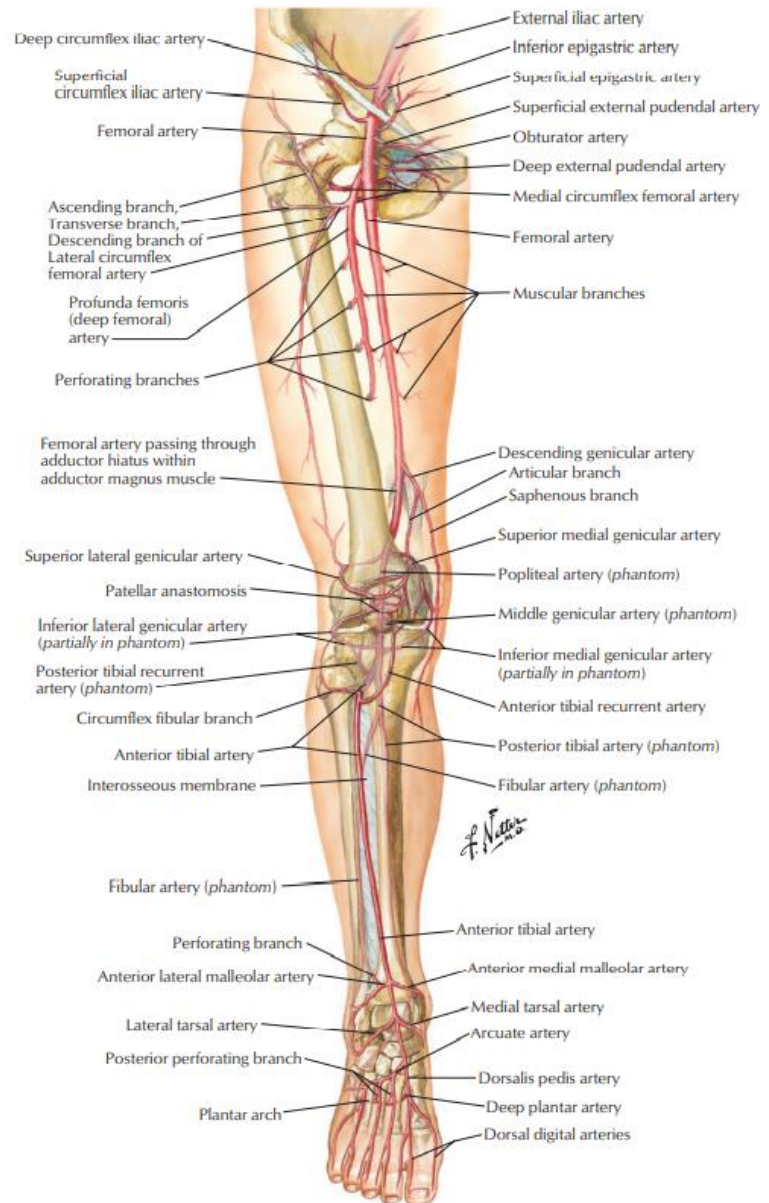
Respiratory diaphragm
 Right suprarenal gland
 Right kidney
 Right renal artery and vein
 Right subcostal nerve
 Transversus abdominis muscle
 Quadratus lumborum muscle
 Iliac crest
 Psoas major muscle
 Iliacus muscle
 Right ureter
 Right common iliac artery
 Right external iliac artery
 Right internal iliac artery
 Urinary bladder

Esophagus
 Left suprarenal gland
 Celiac trunk
 Left kidney
 Left renal artery and vein
 Superior mesenteric artery (cut)
 Subcostal nerve
 Abdominal aorta
 Iliohypogastric nerve
 Ilioinguinal nerve
 Lateral femoral cutaneous nerve
 Genitofemoral nerve
 Left testicular (ovarian) artery and vein
 Inferior mesenteric artery (cut)
 Peritoneum (cut)
 Sigmoid mesocolon (cut)
 Rectum

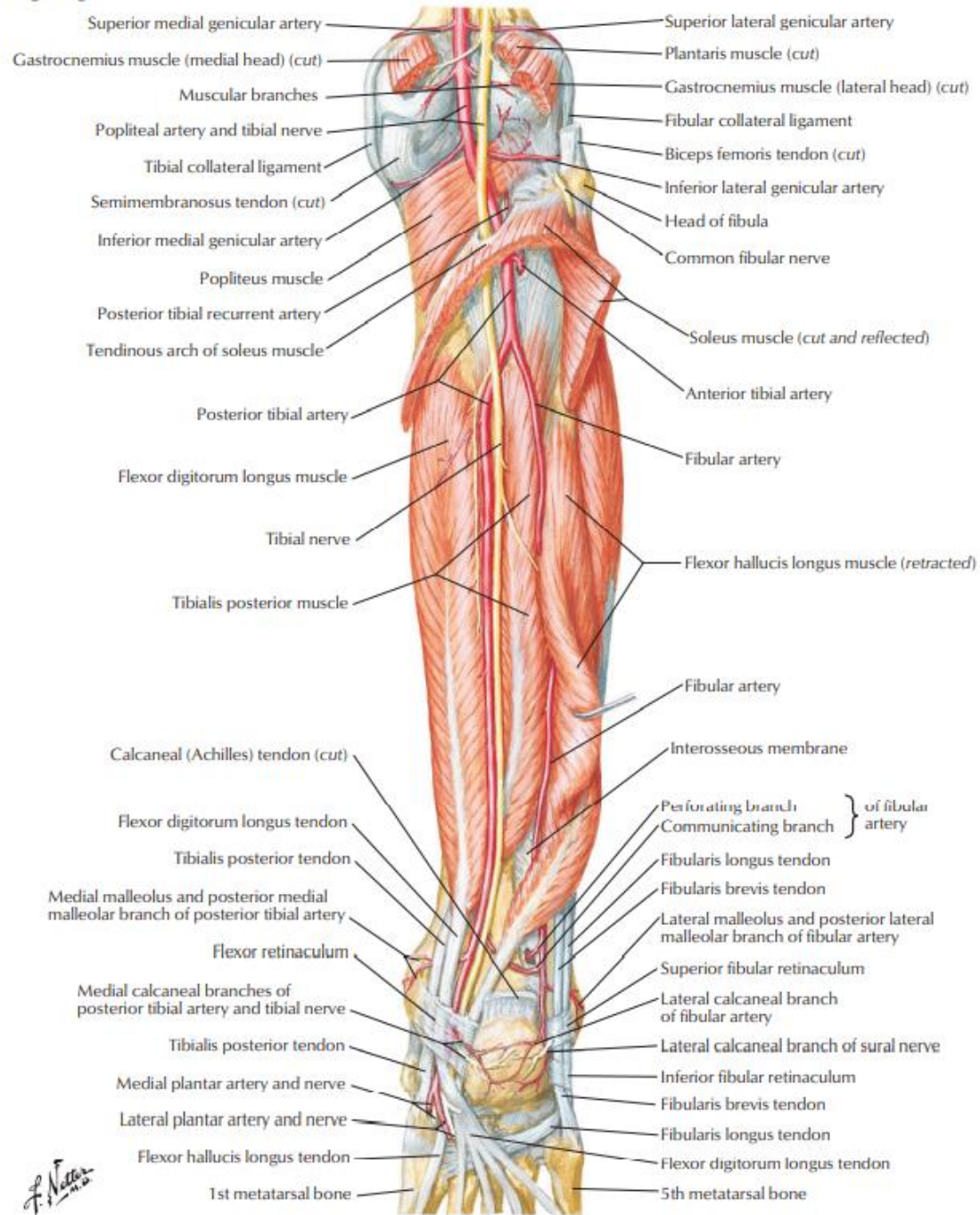
F. Netter
 M.D.



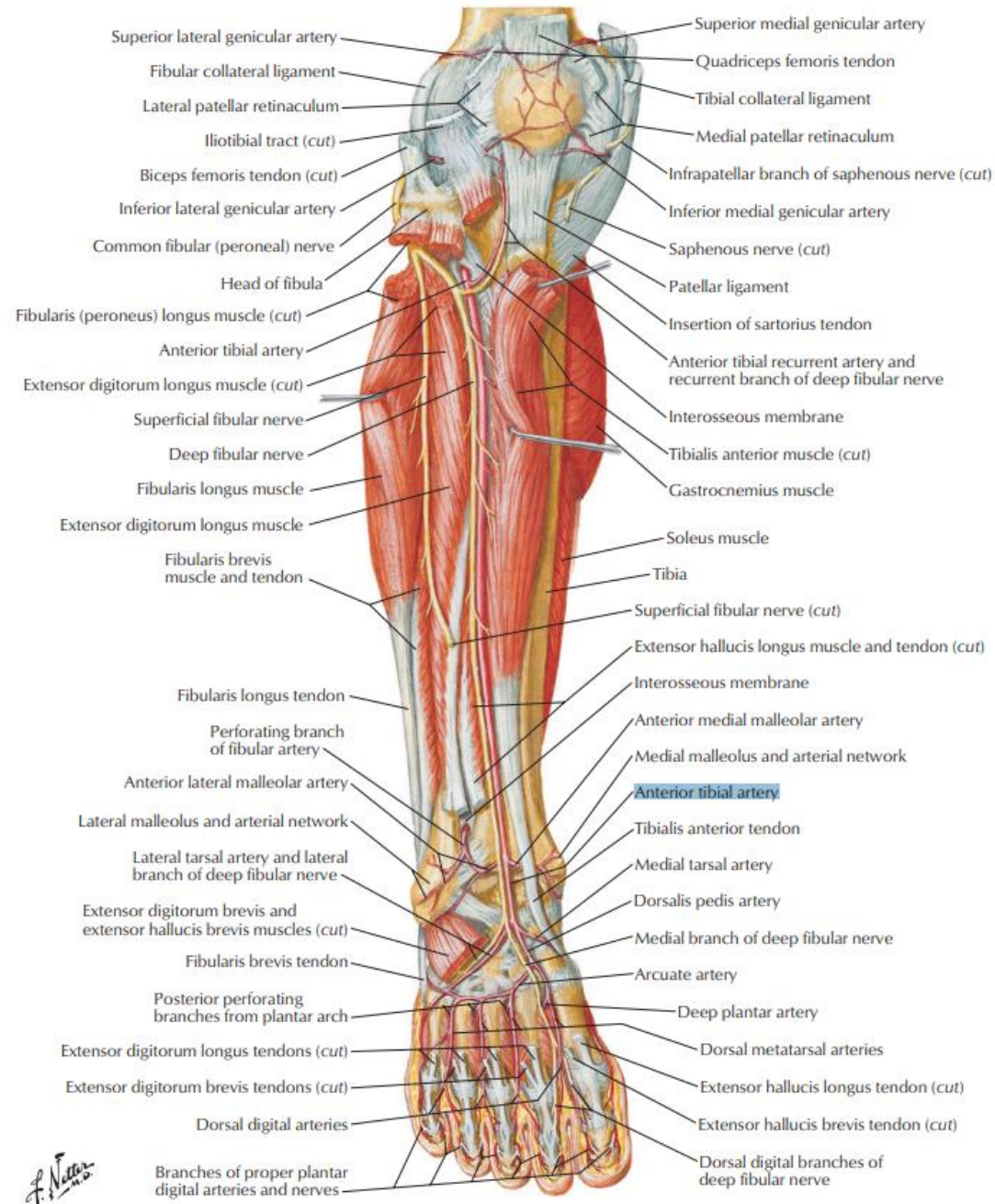
F. Netter M.D.



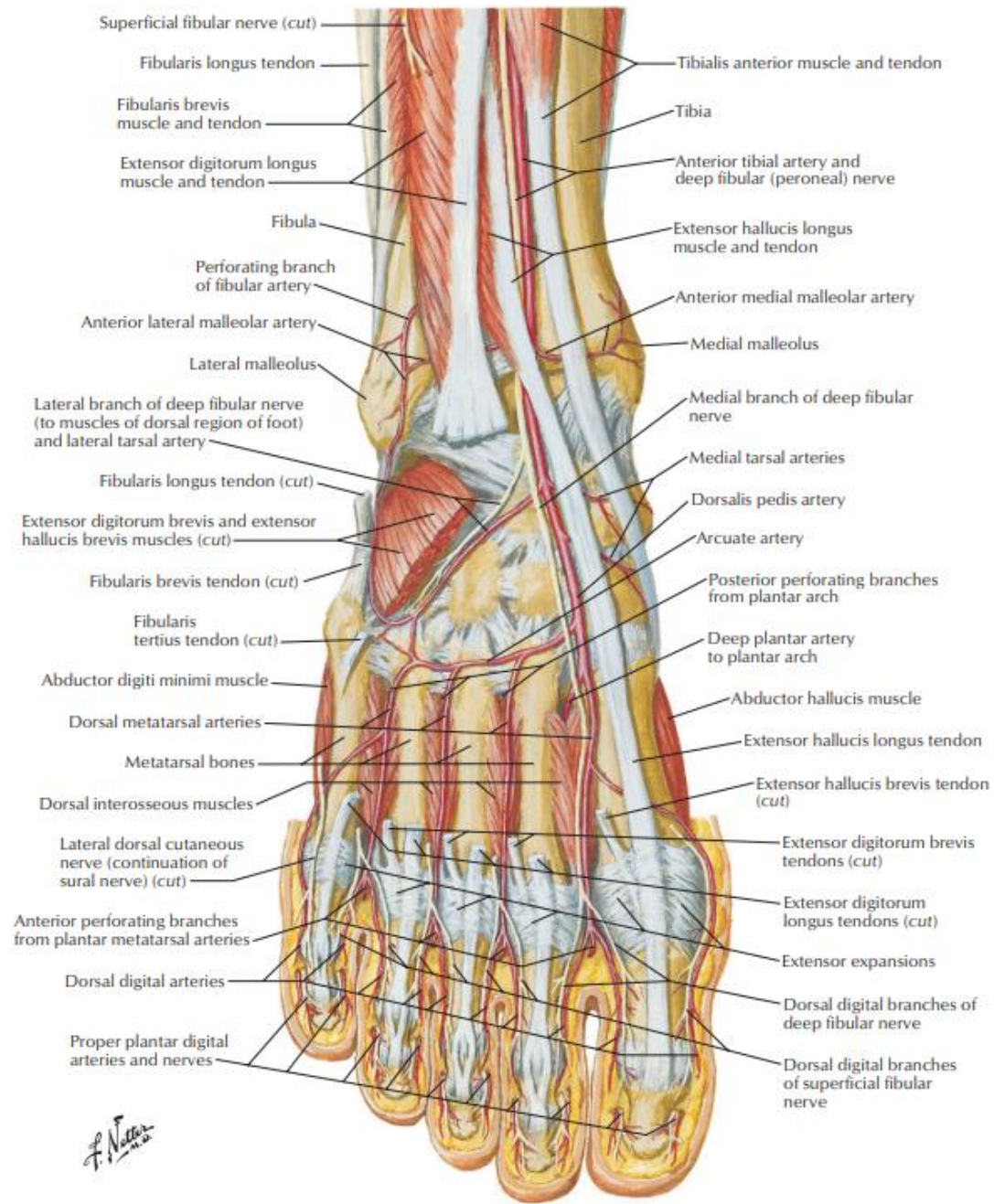
Right leg



F. Netter
M.D.



F. Netter
 M.D.



F. Netter

- Tronco braquiocefálico
- A. carótida comum direita e esquerda
- A. subclávia direita e esquerda
- Arco da aorta
- Aorta descendente
- A. axilar
- A. braquial
- A. braquial profunda
- A. radial
- A. ulnar
- Arco palmar superficial e profundo
- a. facial
- A. labial inferior e superior
- A. nasal lateral
- A. angular
- A. maxilar
- A. temporal superficial
- Ramo frontal e parietal da a. temporal superficial

- Tronco celíaco
- A. renal
- A. gonadal
- A. mesentérica superior
- A. mesentérica inferior
- A. ilíaca comum
- A. ilíaca externa e interna
- A. femoral
- A. poplítea
- a. tibial posterior
- A. fibular
- A. tibial anterior
- A. dorsal do pé